

COPYRIGHT ART. 21(1) 98/1979

GENERAL NOTES:
 ALL MATERIALS AND CONSTRUCTION METHODS TO BE USED SHALL BE IN ACCORDANCE WITH THE NATIONAL BUILDING REGULATIONS AND ALL APPLICABLE BY-LAWS OF THE CITY OF TORONTO. ALL DRAWINGS SHALL BE VERIFIED ON SITE AND NO DRAWING IS TO BE SCALED. ANY DISCREPANCIES OR CONTRADICTIONS SHALL BE POINTED OUT TO THE ARCHITECT FOR CORRECTION PRIOR TO COMMENCEMENT OF CONSTRUCTION. NO CONSTRUCTION SHALL COMMENCE PRIOR TO APPROVAL BY THE LOCAL AUTHORITY. SAID CONSTRUCTION SHALL BE IN ACCORDANCE WITH ALL PROFESSIONAL CONSULTANTS' REPORTS AND ANY CLAIMS THEREON.

WHENEVER WRITES:

1. ALL CONSTRUCTION SHALL BE IN ACCORDANCE WITH THE NATIONAL BUILDING REGULATIONS AND ALL APPLICABLE BY-LAWS OF THE CITY OF TORONTO.
2. ALL MATERIALS AND CONSTRUCTION METHODS TO BE USED SHALL BE IN ACCORDANCE WITH THE NATIONAL BUILDING REGULATIONS AND ALL APPLICABLE BY-LAWS OF THE CITY OF TORONTO.
3. ALL CONSTRUCTION SHALL BE IN ACCORDANCE WITH THE NATIONAL BUILDING REGULATIONS AND ALL APPLICABLE BY-LAWS OF THE CITY OF TORONTO.
4. ALL CONSTRUCTION SHALL BE IN ACCORDANCE WITH THE NATIONAL BUILDING REGULATIONS AND ALL APPLICABLE BY-LAWS OF THE CITY OF TORONTO.
5. ALL CONSTRUCTION SHALL BE IN ACCORDANCE WITH THE NATIONAL BUILDING REGULATIONS AND ALL APPLICABLE BY-LAWS OF THE CITY OF TORONTO.
6. ALL CONSTRUCTION SHALL BE IN ACCORDANCE WITH THE NATIONAL BUILDING REGULATIONS AND ALL APPLICABLE BY-LAWS OF THE CITY OF TORONTO.
7. ALL CONSTRUCTION SHALL BE IN ACCORDANCE WITH THE NATIONAL BUILDING REGULATIONS AND ALL APPLICABLE BY-LAWS OF THE CITY OF TORONTO.
8. ALL CONSTRUCTION SHALL BE IN ACCORDANCE WITH THE NATIONAL BUILDING REGULATIONS AND ALL APPLICABLE BY-LAWS OF THE CITY OF TORONTO.
9. ALL CONSTRUCTION SHALL BE IN ACCORDANCE WITH THE NATIONAL BUILDING REGULATIONS AND ALL APPLICABLE BY-LAWS OF THE CITY OF TORONTO.
10. ALL CONSTRUCTION SHALL BE IN ACCORDANCE WITH THE NATIONAL BUILDING REGULATIONS AND ALL APPLICABLE BY-LAWS OF THE CITY OF TORONTO.
11. ALL CONSTRUCTION SHALL BE IN ACCORDANCE WITH THE NATIONAL BUILDING REGULATIONS AND ALL APPLICABLE BY-LAWS OF THE CITY OF TORONTO.
12. ALL CONSTRUCTION SHALL BE IN ACCORDANCE WITH THE NATIONAL BUILDING REGULATIONS AND ALL APPLICABLE BY-LAWS OF THE CITY OF TORONTO.
13. ALL CONSTRUCTION SHALL BE IN ACCORDANCE WITH THE NATIONAL BUILDING REGULATIONS AND ALL APPLICABLE BY-LAWS OF THE CITY OF TORONTO.
14. ALL CONSTRUCTION SHALL BE IN ACCORDANCE WITH THE NATIONAL BUILDING REGULATIONS AND ALL APPLICABLE BY-LAWS OF THE CITY OF TORONTO.
15. ALL CONSTRUCTION SHALL BE IN ACCORDANCE WITH THE NATIONAL BUILDING REGULATIONS AND ALL APPLICABLE BY-LAWS OF THE CITY OF TORONTO.
16. ALL CONSTRUCTION SHALL BE IN ACCORDANCE WITH THE NATIONAL BUILDING REGULATIONS AND ALL APPLICABLE BY-LAWS OF THE CITY OF TORONTO.
17. ALL CONSTRUCTION SHALL BE IN ACCORDANCE WITH THE NATIONAL BUILDING REGULATIONS AND ALL APPLICABLE BY-LAWS OF THE CITY OF TORONTO.
18. ALL CONSTRUCTION SHALL BE IN ACCORDANCE WITH THE NATIONAL BUILDING REGULATIONS AND ALL APPLICABLE BY-LAWS OF THE CITY OF TORONTO.
19. ALL CONSTRUCTION SHALL BE IN ACCORDANCE WITH THE NATIONAL BUILDING REGULATIONS AND ALL APPLICABLE BY-LAWS OF THE CITY OF TORONTO.
20. ALL CONSTRUCTION SHALL BE IN ACCORDANCE WITH THE NATIONAL BUILDING REGULATIONS AND ALL APPLICABLE BY-LAWS OF THE CITY OF TORONTO.

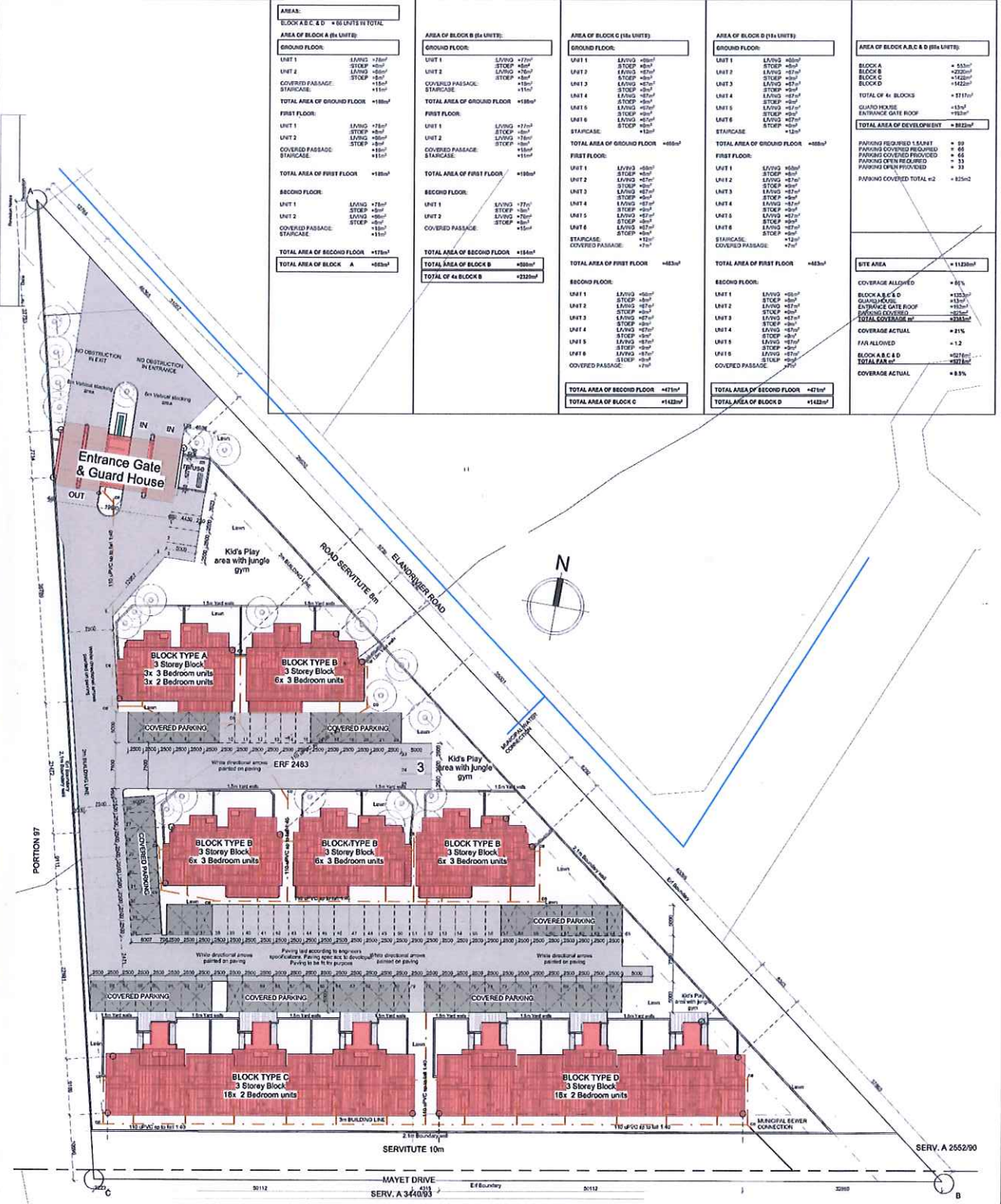
ANTON BIRT
 P.L.S.
 19-6-2023

GENERAL NOTES:
 ALL MATERIALS AND CONSTRUCTION METHODS TO BE USED SHALL BE IN ACCORDANCE WITH THE NATIONAL BUILDING REGULATIONS AND ALL APPLICABLE BY-LAWS OF THE CITY OF TORONTO. ALL DRAWINGS SHALL BE VERIFIED ON SITE AND NO DRAWING IS TO BE SCALED. ANY DISCREPANCIES OR CONTRADICTIONS SHALL BE POINTED OUT TO THE ARCHITECT FOR CORRECTION PRIOR TO COMMENCEMENT OF CONSTRUCTION. NO CONSTRUCTION SHALL COMMENCE PRIOR TO APPROVAL BY THE LOCAL AUTHORITY. SAID CONSTRUCTION SHALL BE IN ACCORDANCE WITH ALL PROFESSIONAL CONSULTANTS' REPORTS AND ANY CLAIMS THEREON.

Project Description / Project Background
North West Development
 Erf 2483, Cashan Ext 20,
 RUSTENBURG

Description / Background
SITE PLAN - 66 UNITS

Drawing Number / Drawing Number
20040S10
 Date / Date
 21-6-2023
 6:00:00 AM
 Checkers
 ANTON BIRT
 As
 Indicated



AREA: BLOCK A (6 UNITS) TOTAL AREA OF BLOCK A (6 UNITS)

GROUND FLOOR:	
UNIT 1	LIVING +78m ²
UNIT 2	LIVING +80m ²
UNIT 3	LIVING +82m ²
UNIT 4	LIVING +84m ²
UNIT 5	LIVING +86m ²
UNIT 6	LIVING +88m ²
COVERED PASSAGE:	+15m ²
STAIRCASE:	+15m ²
TOTAL AREA OF GROUND FLOOR	+486m²
FIRST FLOOR:	
UNIT 1	LIVING +75m ²
UNIT 2	STOEP +8m ²
UNIT 3	LIVING +80m ²
UNIT 4	LIVING +82m ²
UNIT 5	LIVING +84m ²
UNIT 6	LIVING +86m ²
COVERED PASSAGE:	+8m ²
STAIRCASE:	+15m ²
TOTAL AREA OF FIRST FLOOR	+483m²
SECOND FLOOR:	
UNIT 1	LIVING +78m ²
UNIT 2	STOEP +8m ²
UNIT 3	LIVING +80m ²
UNIT 4	LIVING +82m ²
UNIT 5	LIVING +84m ²
UNIT 6	LIVING +86m ²
COVERED PASSAGE:	+8m ²
STAIRCASE:	+15m ²
TOTAL AREA OF SECOND FLOOR	+483m²
TOTAL AREA OF BLOCK A	+1452m²

AREA OF BLOCK B (6 UNITS):

GROUND FLOOR:	
UNIT 1	LIVING +77m ²
UNIT 2	LIVING +79m ²
UNIT 3	LIVING +81m ²
UNIT 4	LIVING +83m ²
UNIT 5	LIVING +85m ²
UNIT 6	LIVING +87m ²
COVERED PASSAGE:	+15m ²
STAIRCASE:	+15m ²
TOTAL AREA OF GROUND FLOOR	+483m²
FIRST FLOOR:	
UNIT 1	LIVING +74m ²
UNIT 2	STOEP +8m ²
UNIT 3	LIVING +79m ²
UNIT 4	LIVING +81m ²
UNIT 5	LIVING +83m ²
UNIT 6	LIVING +85m ²
COVERED PASSAGE:	+8m ²
STAIRCASE:	+15m ²
TOTAL AREA OF FIRST FLOOR	+480m²
SECOND FLOOR:	
UNIT 1	LIVING +77m ²
UNIT 2	STOEP +8m ²
UNIT 3	LIVING +81m ²
UNIT 4	LIVING +83m ²
UNIT 5	LIVING +85m ²
UNIT 6	LIVING +87m ²
COVERED PASSAGE:	+8m ²
STAIRCASE:	+15m ²
TOTAL AREA OF SECOND FLOOR	+483m²
TOTAL AREA OF BLOCK B	+1446m²
TOTAL OF 4 BLOCKS	+1326m²

AREA OF BLOCK C (6 UNITS):

GROUND FLOOR:	
UNIT 1	LIVING +80m ²
UNIT 2	LIVING +82m ²
UNIT 3	LIVING +84m ²
UNIT 4	LIVING +86m ²
UNIT 5	LIVING +88m ²
UNIT 6	LIVING +90m ²
COVERED PASSAGE:	+15m ²
STAIRCASE:	+15m ²
TOTAL AREA OF GROUND FLOOR	+486m²
FIRST FLOOR:	
UNIT 1	LIVING +77m ²
UNIT 2	STOEP +8m ²
UNIT 3	LIVING +82m ²
UNIT 4	LIVING +84m ²
UNIT 5	LIVING +86m ²
UNIT 6	LIVING +88m ²
COVERED PASSAGE:	+8m ²
STAIRCASE:	+15m ²
TOTAL AREA OF FIRST FLOOR	+483m²
SECOND FLOOR:	
UNIT 1	LIVING +80m ²
UNIT 2	STOEP +8m ²
UNIT 3	LIVING +84m ²
UNIT 4	LIVING +86m ²
UNIT 5	LIVING +88m ²
UNIT 6	LIVING +90m ²
COVERED PASSAGE:	+8m ²
STAIRCASE:	+15m ²
TOTAL AREA OF SECOND FLOOR	+483m²
TOTAL AREA OF BLOCK C	+1452m²

AREA OF BLOCK D (6 UNITS):

GROUND FLOOR:	
UNIT 1	LIVING +82m ²
UNIT 2	LIVING +84m ²
UNIT 3	LIVING +86m ²
UNIT 4	LIVING +88m ²
UNIT 5	LIVING +90m ²
UNIT 6	LIVING +92m ²
COVERED PASSAGE:	+15m ²
STAIRCASE:	+15m ²
TOTAL AREA OF GROUND FLOOR	+486m²
FIRST FLOOR:	
UNIT 1	LIVING +79m ²
UNIT 2	STOEP +8m ²
UNIT 3	LIVING +84m ²
UNIT 4	LIVING +86m ²
UNIT 5	LIVING +88m ²
UNIT 6	LIVING +90m ²
COVERED PASSAGE:	+8m ²
STAIRCASE:	+15m ²
TOTAL AREA OF FIRST FLOOR	+483m²
SECOND FLOOR:	
UNIT 1	LIVING +82m ²
UNIT 2	STOEP +8m ²
UNIT 3	LIVING +86m ²
UNIT 4	LIVING +88m ²
UNIT 5	LIVING +90m ²
UNIT 6	LIVING +92m ²
COVERED PASSAGE:	+8m ²
STAIRCASE:	+15m ²
TOTAL AREA OF SECOND FLOOR	+483m²
TOTAL AREA OF BLOCK D	+1452m²

AREA OF BLOCK A, B, C & D (24 UNITS):

BLOCK A	+1452m ²
BLOCK B	+1446m ²
BLOCK C	+1452m ²
BLOCK D	+1452m ²
TOTAL OF 4 BLOCKS	+5802m²
GUARD HOUSE	+15m ²
ENTRANCE GATE ROOF	+15m ²
TOTAL AREA OF DEVELOPMENT	+5832m²
PARKING REQUIRED 1:0.4:1	+ 88
PARKING COVERED REQUIRED	+ 68
PARKING COVERED PROVIDED	+ 66
PARKING OPEN REQUIRED	+ 33
PARKING OPEN PROVIDED	+ 33
PARKING COVERED TOTAL	+ 124
SITE AREA	+ 1128m²
COVERAGE ALLOWED	+ 81%
BLOCK A, B, C & D	+1533m ²
GUARD HOUSE	+15m ²
ENTRANCE GATE ROOF	+15m ²
PARKING COVERED	+124m ²
TOTAL COVERAGE	+1687m²
COVERAGE ACTUAL	+ 81%
FAR ALLOWED	+ 1.2
BLOCK A, B, C & D	+5718m ²
TOTAL FAR ACT.	+5718m²
COVERAGE ACTUAL	+ 83%

Site Plan - 66 UNIT TOTAL
 1:300